

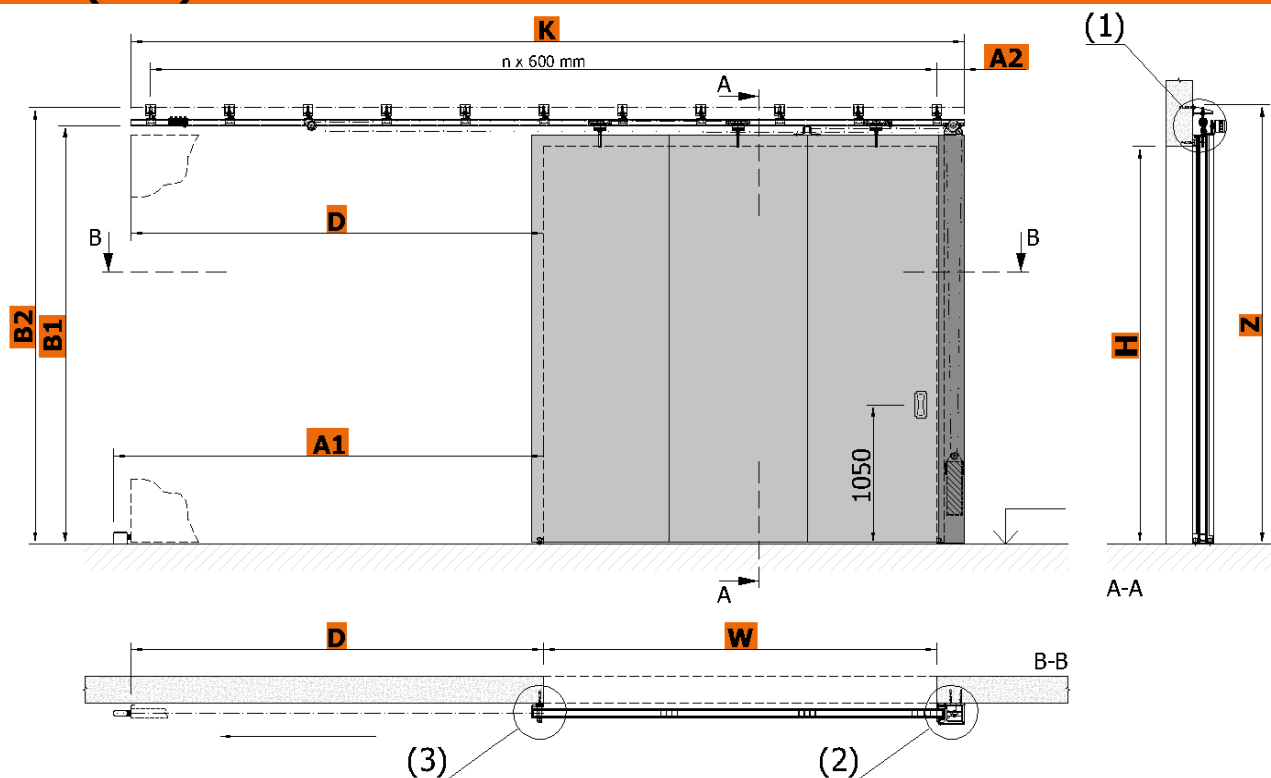


TECHNICAL DATA SHEET SINGLE LEAF SLIDING FIRE GATES SGS (1+0) EI 60

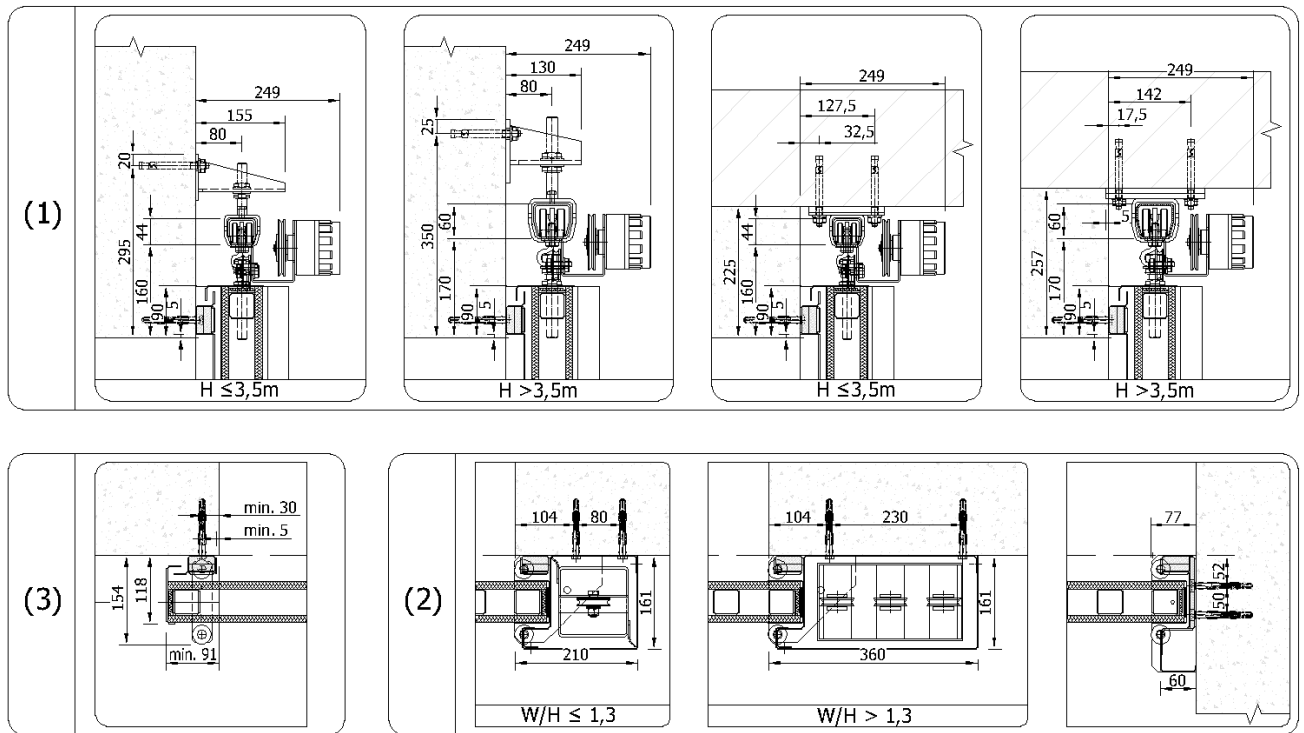
Technical data sheets serve to determine the basic space requirements of sliding fire gates. Other dimensions or atypical demands can be solved upon request.

SGS (1+0) EI 60

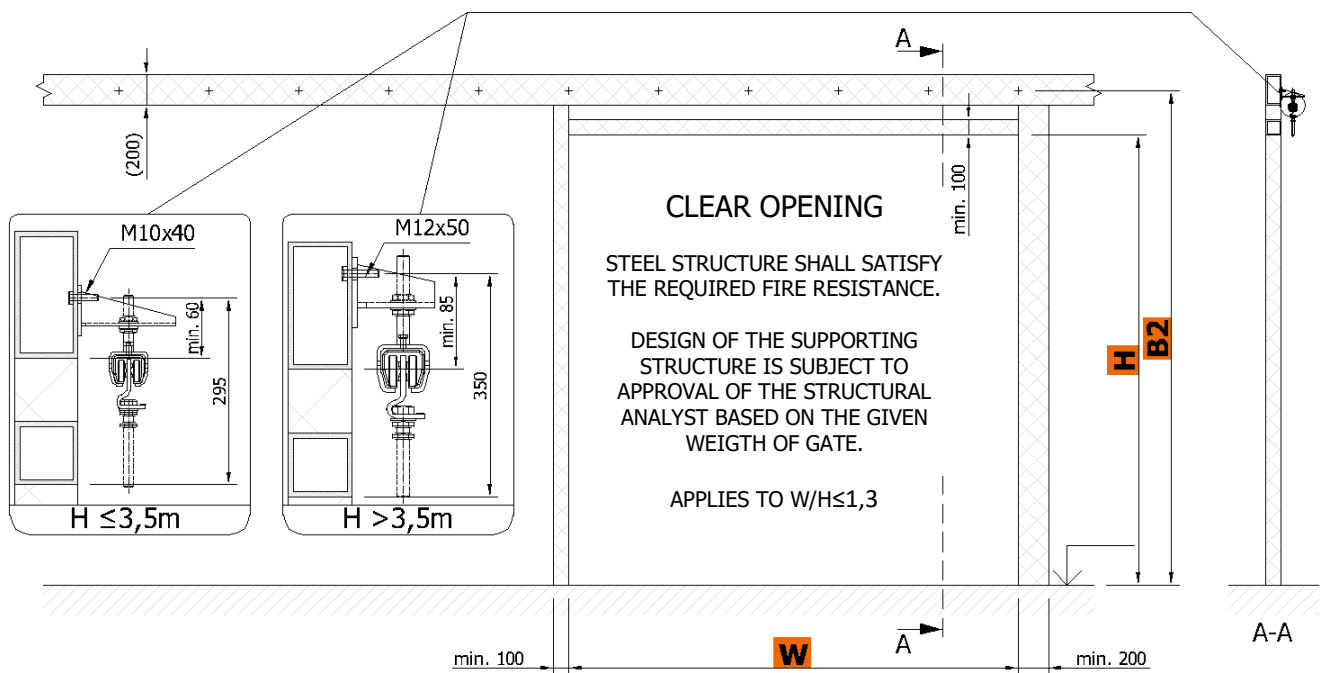
COUNTERWEIGHT



W	opening width [mm]		H	opening height [mm]
D	gate range	= W + min. 150 mm		
A1	floor stop	= D + 130 mm		
A2	overlap from edge of opening	= (W / H ≤ 1,3) => 210 mm; (W / H > 1,3) => 360 mm		
K	length of rail	= D + W + A2 mm		
B1	height of rail from floor	= (H ≤ 3,5 m) => H + 160 mm; (H > 3,5 m) => H + 170 mm		
B2	axis of fixing system	= (H ≤ 3,5 m) => H + 295 mm; (H > 3,5 m) => H + 350 mm		
Z	overall height without cover	= (H ≤ 3,5 m) => H + 315 mm; (H > 3,5 m) => H + 375 mm		



Minimum required dimensions of steel structure



Construction readiness of the opening is secured by the customer according to the requirements of the contractor and depending on the type of jamb and lintel of the opening.

Anchor brackets can be fixed with anchor bolts (concrete, solid brick), or to anchor targets with bolts through wall (foam silicate, gas silicate or breeze (hollow) blocks), or to prepared steel structure with appropriate fire resistance (plasterboard wall, sandwich panels etc.). It is necessary to respect the flatness of the wall and the floor with a tolerance of max. 3 mm/m.

Technical changes reserved.

Would you like to know more? Contact us.