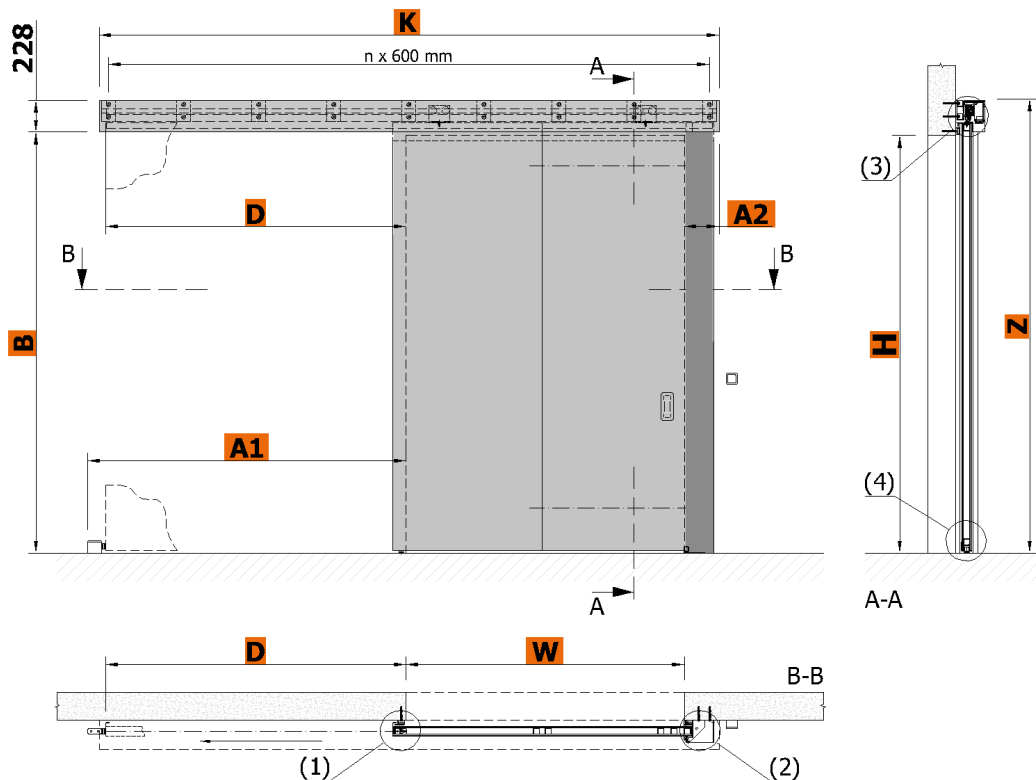




TECHNICAL DATA SHEET SINGLE LEAF SLIDING FIRE GATES SGS-Dynamic (1+0) EI 60/EW 90 (Sa/S200)

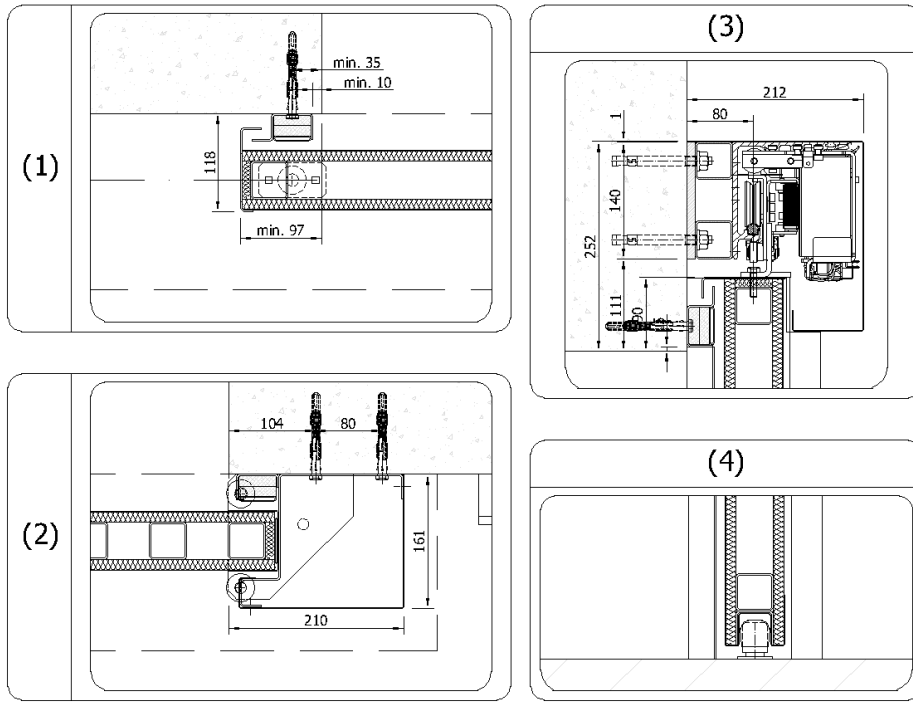
Technical data sheets serve to determine the basic space requirements of sliding fire gates. Other dimensions or atypical demands can be solved upon request.

SGS-Dynamic (1+0) EI 60/EW 90

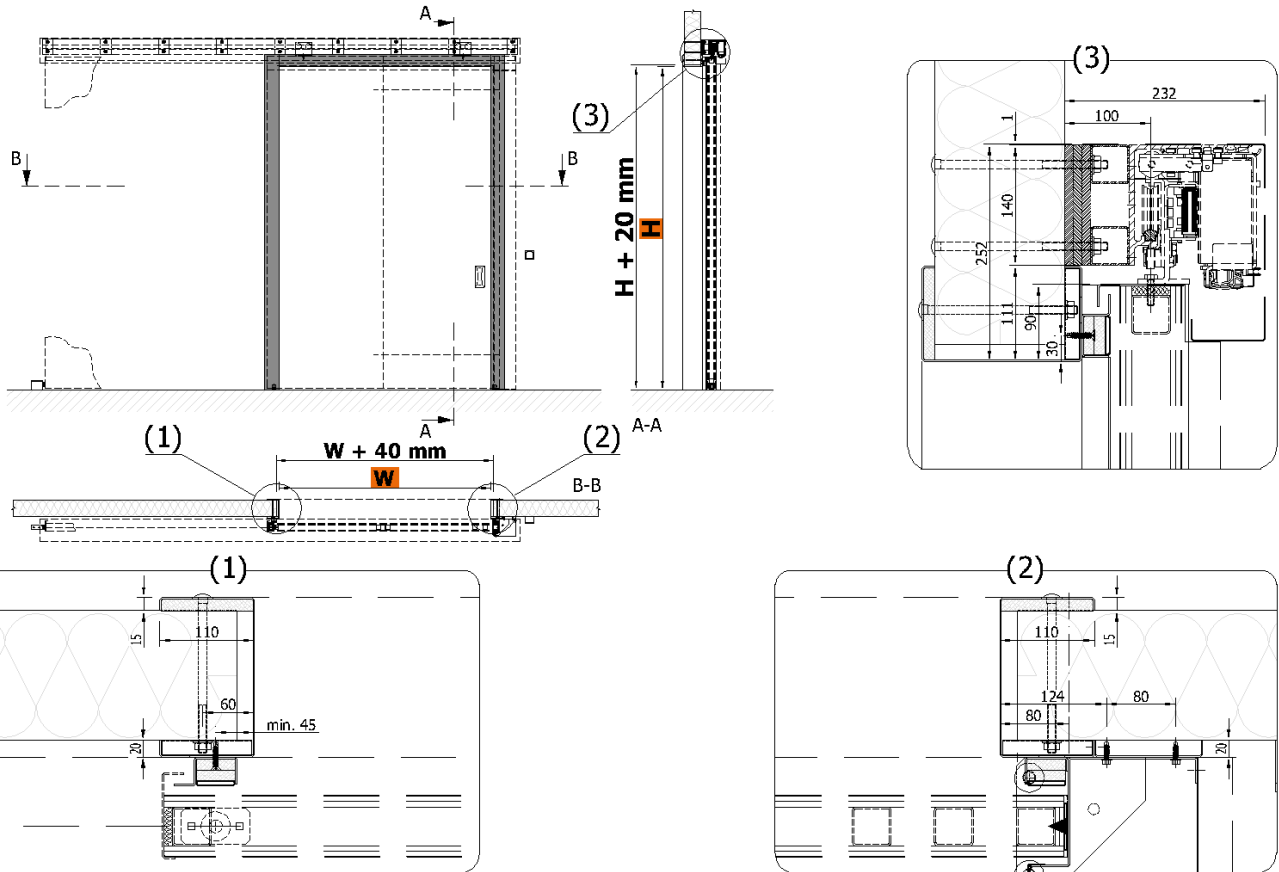


		2301	2401
W	opening width [mm] *	= 700 ÷ 1100 (MAX. 2,25 m ²)	800 ÷ 2800 (MAX. 8 m ²)
H	opening height [mm]	= 1900 ÷ 2500	1900 ÷ 3500
D	gate range	= W + min. 150 mm	
A1	floor stop	= D + 130 mm	
A2	overlap from edge of opening	= 260 mm	
K	length of drive unit	= D + W + 260 mm	
B	bottom edge of covering	= H + 24 mm	
Z	overall height	= H + 255 mm	

* Other dimensions on request after consultation with the producer.



Can be applied to the wall panel



Construction readiness of the opening is secured by the customer according to the requirements of the contractor. It is necessary to respect the flatness of the wall and the floor with a tolerance of max. 3 mm/m.

Technical changes reserved.

TECHNICAL DATA SHEET SGS-Dynamic (1+0) EI 60/EW 90



Would you like to know more? Contact us.

Somati system s.r.o., Jihlavská 510/2c, 664 41 Troubsko
 IČ: 29260159, DIČ: CZ29260159
 www.somati-system.cz